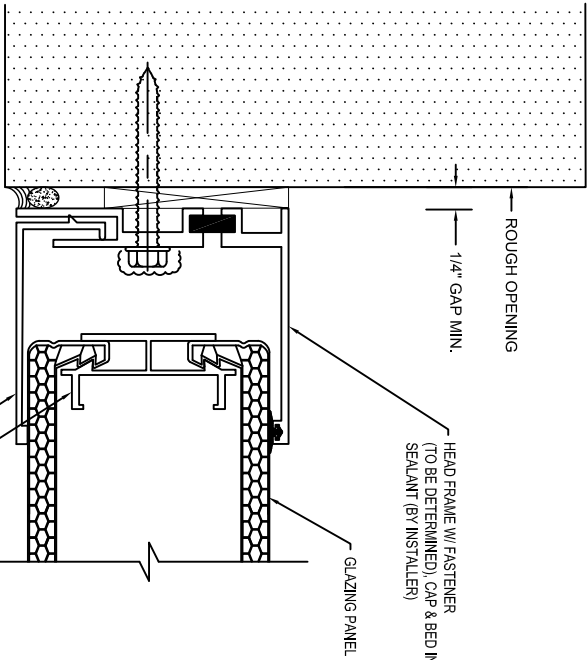
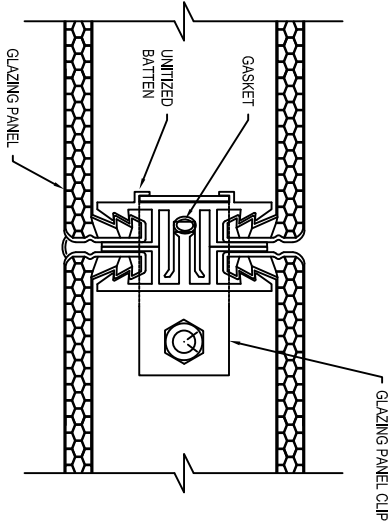


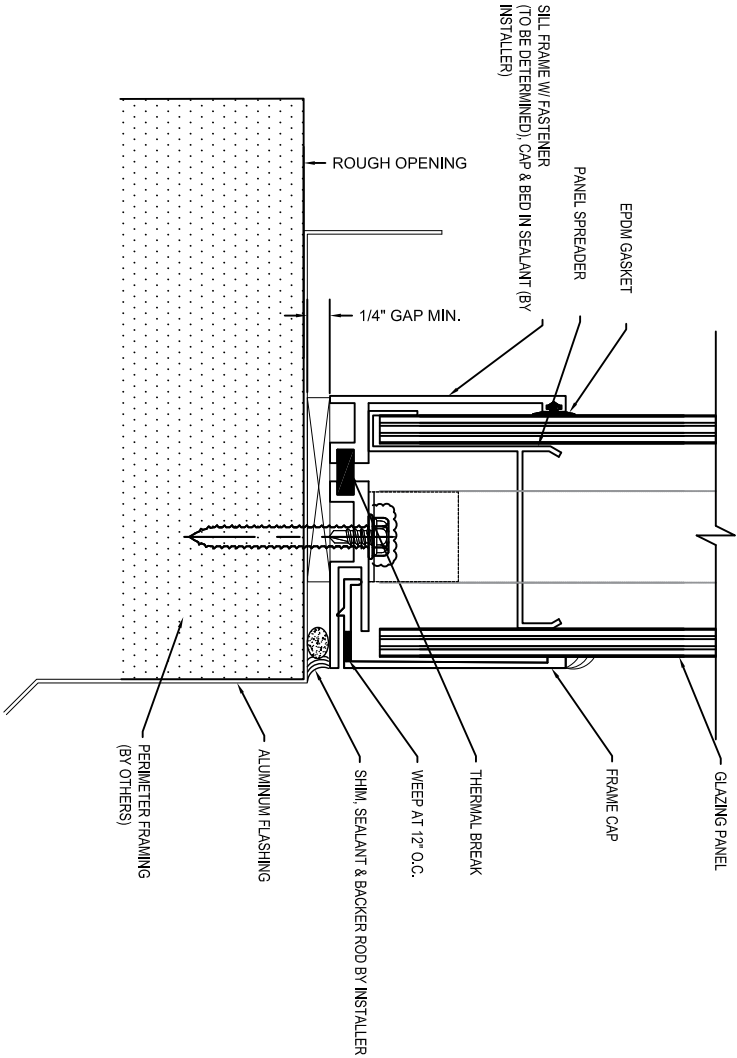
**B** SECTION @ HEAD  
UNIQUEAD WINDOW



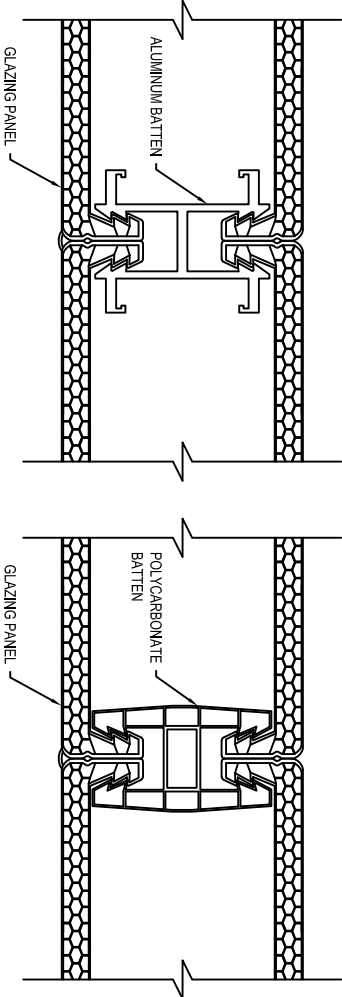
**C2** SECTION @ JAMB  
UNIQUEAD WINDOW



**D2** BATTEN @ PANELIZED SECTION  
UNIQUEAD WINDOW



**A2** SECTION @ SILL  
UNIQUEAD WINDOW



**E2** BATTEN DETAIL  
UNIQUEAD WINDOW

BATTEN SELECTION IS DEPENDANT ON SPAN AND PROJECT DESIGN PRESSURE.



2862 N. Ballard Drive  
Lake Forest, IL 60045 USA  
T: +1 847 316 1060  
F: +1 847 316 0475

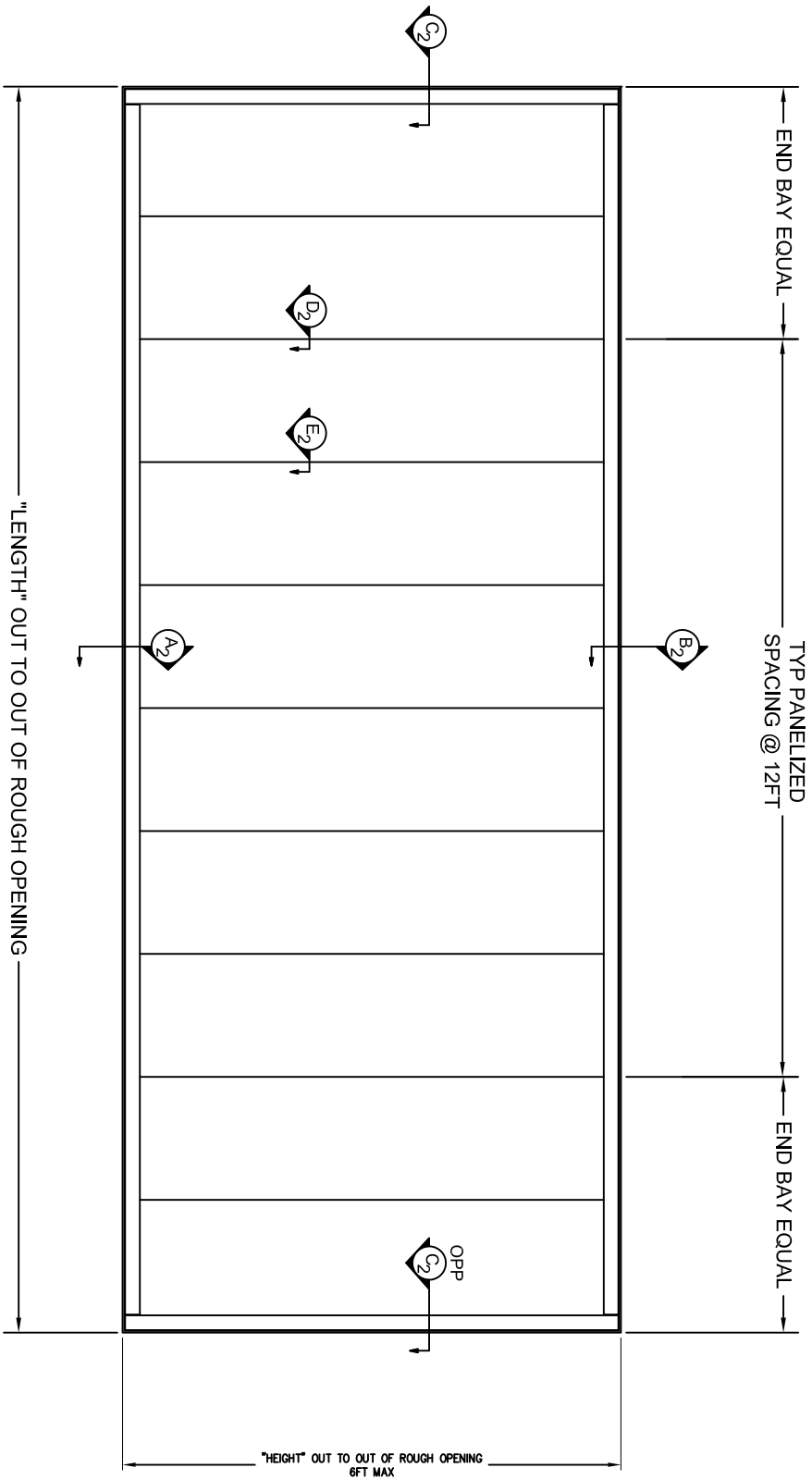
**Note**  
The standard details shown are for reference only. Please contact our Architectural Support Department for job specific details and for information regarding the usage, limitations, and/or code requirements pertaining to this product, please contact us at: [ArchSupportNA@kingspan.com](mailto:ArchSupportNA@kingspan.com)

Details are subject to change and should be verified with our Architectural Support Department prior to implementation, please contact us at: [ArchSupportNA@kingspan.com](mailto:ArchSupportNA@kingspan.com)

SHEET NO.

20F2

# UNIQUEAD TRANSLUCENT WINDOW



ELEVATION

# UNIQUAD TRANSLUCENT WINDOW



2862 N. Ballard Drive  
Lake Forest, IL 60045 USA  
T: +1 847 316 1060  
F: +1 847 316 0475

**Note**  
The standard details shown are for reference only.  
Please contact our Architectural Support Department for job specific details and for information regarding the usage, limitations, and/or code requirements pertaining to this product, please contact us at:  
ArchSupportNA@kingspan.com

Details are subject to change and should be verified with our Architectural Support Department prior to implementation, please contact us at: ArchSupportNA@kingspan.com

SHEET NO.  
10F2